

Government of India  
Ministry of Earth Sciences  
India Meteorological Department



Press Release

Date: 04<sup>th</sup> March, 2025

Time of Issue: 1330 hours IST

**Subject: Scattered rainfall/snowfall over Western Himalayan Region today, the 04<sup>th</sup> March, 2025 and no significant weather likely over rest parts of the country during next 4-5 days.**

**i. Realised weather during past 24 hours till 0830 hours IST of today, the 04<sup>th</sup> March 2025:**

- ❖ Light to moderate **Rainfall/Snowfall** observed at most places over Jammu-Kashmir-Ladakh-Gilgit-Baltistan-Muzaffarabad and Himachal Pradesh; at many places over Uttarakhand; at a few places over Arunachal Pradesh; Light to moderate **Rainfall** observed at isolated places over Assam & Meghalaya, Nagaland, Manipur, Mizoram & Tripura, Sub-Himalayan West Bengal & Sikkim, Punjab, Haryana- Chandigarh, Tamilnadu Puducherry & Karaikal and Kerala & Mahe.
- ❖ **Thunderstorm with lightning** reported at isolated places over Jammu-Kashmir-Ladakh-Gilgit-Baltistan-Muzaffarabad, Himachal Pradesh, Uttarakhand, Punjab, Kerala & Mahe.
- ❖ **Hailstorm** recorded at isolated places over Himachal Pradesh.
- ❖ **Gusty winds** observed at isolated places over Himachal Pradesh and East Uttar Pradesh.
- ❖ **For more details of realised weather, kindly refer Annexure I**

**Temperature:**

- ❖ For temperature observations during past 24 hours till 0830 hours IST of today are provided in **Annexure II**

**ii. Weather Systems, Forecast and warning (Annexure III & IV):**

- ❖ A **Western Disturbance** seen as a cyclonic circulation over north Pakistan & neighbourhood at 3.1 km above mean sea level with a trough aloft in middle tropospheric levels roughly along Long. 70°E to the north of Lat. 30°N. Under its influence;
  - ✓ **Scattered** light/moderate rainfall/snowfall accompanied with isolated **thunderstorm and lightning** likely over Uttarakhand on 04<sup>th</sup>; **Scattered** light/moderate rainfall/snowfall likely over Jammu-Kashmir-Ladakh-Gilgit-Baltistan-Muzaffarabad & Himachal Pradesh on 04<sup>th</sup> March.
- ❖ A fresh **Western Disturbance** is likely to affect Western Himalayan region from 09<sup>th</sup> March, 2025. Under its influence;
  - ✓ **Isolated to Scattered** light/moderate rainfall/snowfall likely over Jammu-Kashmir-Ladakh-Gilgit-Baltistan-Muzaffarabad & Himachal Pradesh on 09<sup>th</sup> & 10<sup>th</sup> and Uttarakhand on 10<sup>th</sup> March.
- ❖ A **cyclonic circulation** lies over northeast Assam & neighbourhood in lower tropospheric levels. Under its influence, **Isolated to Scattered** light/moderate rainfall/snowfall likely over Arunachal Pradesh during 04<sup>th</sup>-09<sup>th</sup> March; **Isolated** light/moderate rainfall likely over Assam & Meghalaya on 04<sup>th</sup> march.
- ❖ **Isolated to Scattered** light/moderate rainfall accompanied with **thunderstorm, lightning & gusty winds (speed 30-40 kmph)** likely over Bihar on 08<sup>th</sup>; with **thunderstorm & lightning** over Sub-Himalayan West Bengal & Sikkim on 07<sup>th</sup> & 08<sup>th</sup> March.
- ❖ **Isolated** light/moderate rainfall accompanied with **thunderstorm and lightning** likely over Kerala & Mahe on 04<sup>th</sup> March.

**Temperature Forecast:**

**Forecast of temperature:**

**Maximum temperature:**

- ❖ No significant change in maximum temperatures likely over Northwest India during next 48 hours and gradual rise by 2-4°C thereafter.

- ❖ Gradual rise in maximum temperatures by 2-3°C likely over Northeast India during next 2-3 days and no significant change thereafter.
- ❖ No significant change in maximum temperatures likely over Maharashtra during next 3 days and gradual rise by 2-3°C thereafter.
- ❖ Gradual fall in maximum temperatures by 2-3°C likely over Central India and Gujarat Region during next 2 days and gradual rise by 2-3°C thereafter.
- ❖ No significant change in maximum temperatures likely over rest parts of India during next 4-5 days.

#### **Hot & Humid weather warnings:**

- ❖ **Hot and humid weather** very likely to prevail over Konkan & Goa on 04<sup>th</sup> March.

#### **Fishermen Warnings:**

- ❖ Fishermen are advised not to venture into southwestern parts of southwest Bay of Bengal, along and off south Sri Lanka coast and adjoining Comorin area & north Maharashtra coasts on 04<sup>th</sup>; along and off Gujarat coast on 04<sup>th</sup> & 05<sup>th</sup> March.

### **iii. Weather conditions and forecast over Delhi/NCR during 04<sup>th</sup> March to 07<sup>th</sup> March. 2025 (Annexure V)**

**For more details, kindly refer National Weather Bulletin:**

[https://mausam.imd.gov.in/responsive/all\\_india\\_forecast\\_bulletin.php](https://mausam.imd.gov.in/responsive/all_india_forecast_bulletin.php)

**For District wise warnings refer:** <https://mausam.imd.gov.in/responsive/districtWiseWarningGIS.php>

## **ANNEXURE I**

### **Significant rainfall/snowfall recorded during past 24 hours till 0830 hours IST of today (in cm):**

- ❖ **Jammu-Kashmir-Ladakh-Gilgit-Baltistan-Muzaffarabad:** Batote (dist Ramban) 5, Banihal (dist Ramban) 4, Gund (dist Ganderbal) 4, Govindpura Aws (dist Ramban) 4, Nowgam (dist Kupwara) 3, Udampur(iaf) (dist Udampur) 3, Kishtwar (dist Kishtwar) 3, Raj Pura Arg (dist Poonch) 3, Gulmarg R.s. (dist Baramulla) 3, Bandipora Arg (dist Bandipore) 3, Lolab (dist Kupwara) 3, Bhaderwah Arg (dist Doda) 3;
- ❖ **Himachal Pradesh:** Kothi (dist Kullu) 3, Bhuntar (dist Kullu) 3, Manali (dist Kullu) 3;
- ❖ **Punjab:** Gurdaspur Amfu (dist Gurdaspur) 1

### **Thunderstorm reported:**

- ❖ **Jammu-Kashmir-Ladakh-Gilgit-Baltistan-Muzaffarabad:** Banihal, Batote, Katra, Bhaderwah; **Himachal Pradesh:** Shimla, Palampur, Kangra, Sundernagar, Jot, Bhunter; **Uttarakhand:** Mussoorie; **Punjab:** Patiala.

### **Hailstorm reported:**

- ❖ **Himachal Pradesh:** Kangra & Shilaroo.

- ❖ Maximum temperatures were in the range of 35-39°C at most places over Maharashtra state, Telangana, Coastal Andhra Pradesh & Yanam; at many places over Gujarat State, Odisha, Tamilnadu Puducherry & Karaikal; at a few places over Saurashtra & Kutch, North Interior Karnataka and Kerala & Mahe; at isolated places over Gangetic West Bengal and Coastal Karnataka; 30-35°C at most places over Madhya Pradesh & Rajasthan; at many places over Bihar, Jharkhand, Konkan; at a few places over East Uttar Pradesh & Delhi; at isolated places over Assam, Manipur & Tripura. Yesterday, the highest **maximum temperature of 39.5°C** was reported at **Kurnool (Rayalaseema)** over the plains of the country.
- ❖ During the past 24 hours, **maximum temperatures** had fallen by 1-4°C at many places over Jammu-Kashmir, Rajasthan, East Madhya Pradesh, Bihar, Jharkhand, Gangetic West Bengal, Marathwada and South Interior Karnataka; at a few places over Nagaland, Manipur, Mizoram & Tripura, Telangana & Odisha; at isolated places over Punjab, Himachal Pradesh and Uttarakhand. It had risen by 1-4°C at many places over Haryana, Chandigarh & Delhi, Uttar Pradesh, West Madhya Pradesh; at a few places over Coastal Andhra Pradesh & Yanam and North & South Interior Karnataka and Kerala & Mahe and no significant change over rest parts of the country.
- ❖ Maximum temperatures were **appreciably above normal (3°C to 5°C)** at a few places over Delhi; at isolated places over Madhya Maharashtra, Odisha and Gangetic West Bengal; **above normal (1°C to 3°C)** at most places over Coastal Andhra Pradesh & Yanam and Rayalaseema; at many places over Telangana and North Interior Karnataka; at a few places over Uttarakhand, Chhattisgarh, Jharkhand, Saurashtra & Kutch, Konkan & Goa and Coastal Karnataka; at isolated places over East Uttar Pradesh, Haryana-Chandigarh, Gujarat Region, East Madhya Pradesh, Vidarbha, Assam & Meghalaya, Kerala & Mahe, Tamil Nadu, Puducherry & Karaikal and Lakshadweep. These were **markedly below normal (-5°C or less)** at isolated places over Jammu-Kashmir-Ladakh-Gilgit-Baltistan-Muzaffarabad and Himachal Pradesh; **appreciably below normal (-3°C to -5°C)** at a few places over Punjab and near normal over rest parts of the country.

Fig. 1: Maximum Temperatures

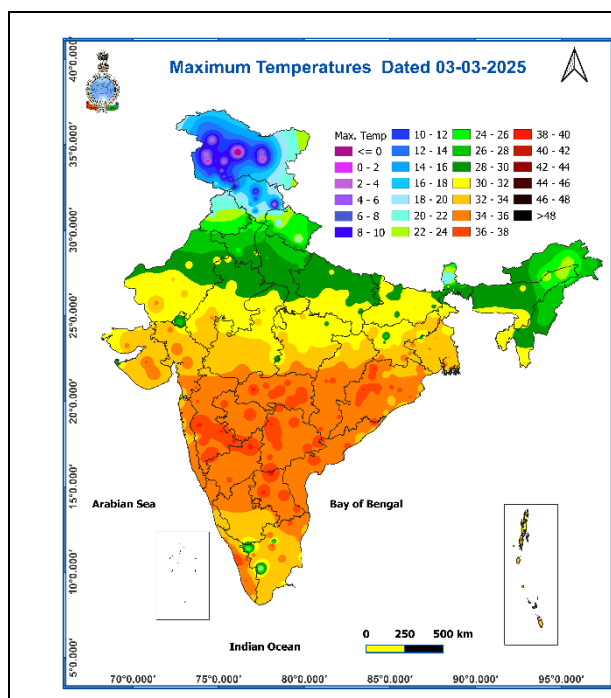
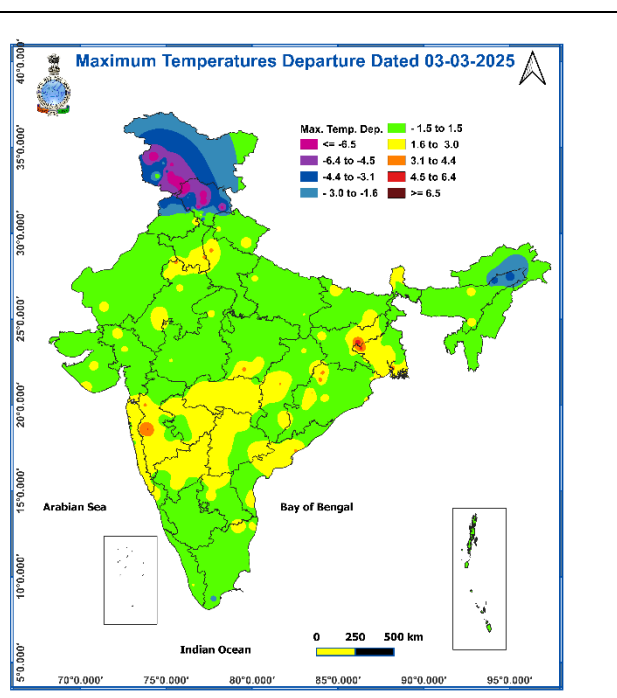


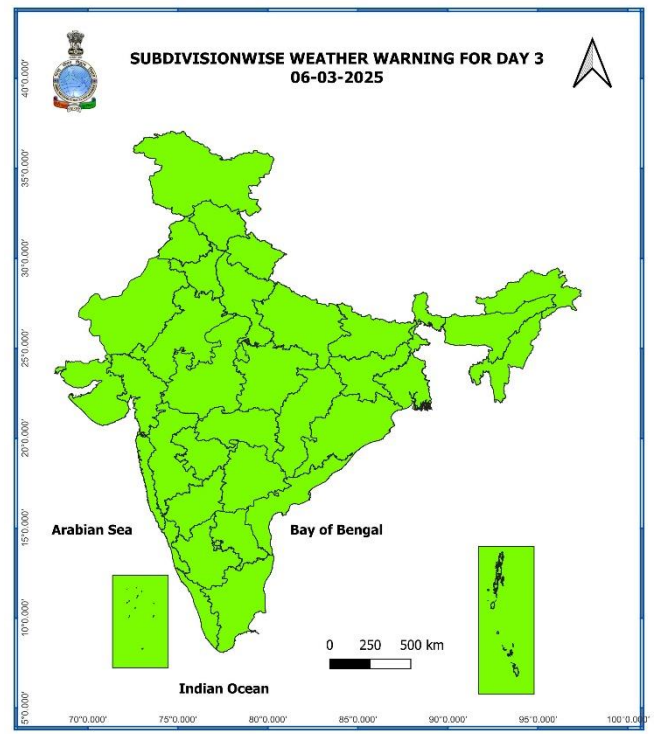
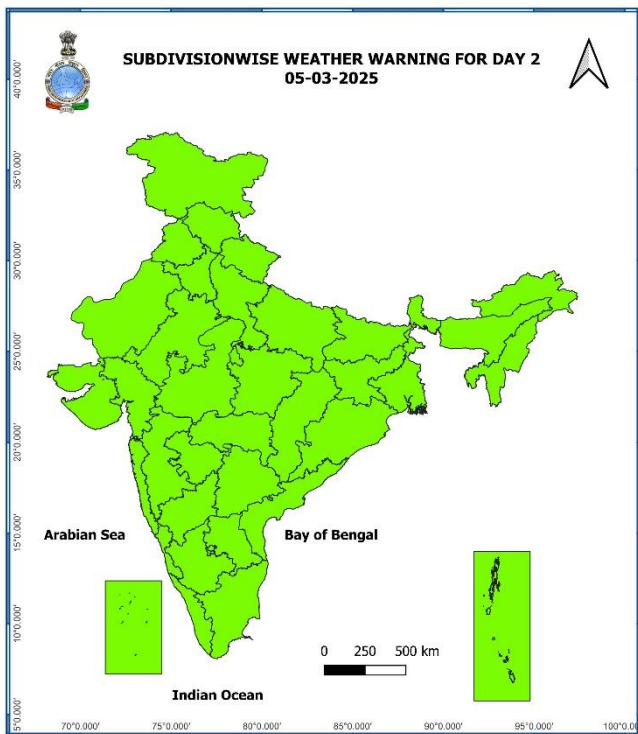
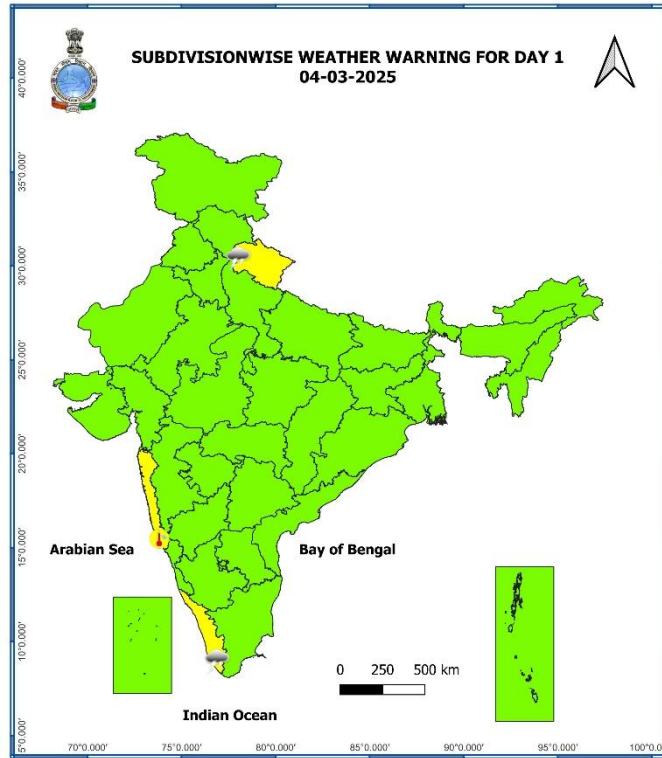
Fig. 2: Departure of Maximum Temperatures

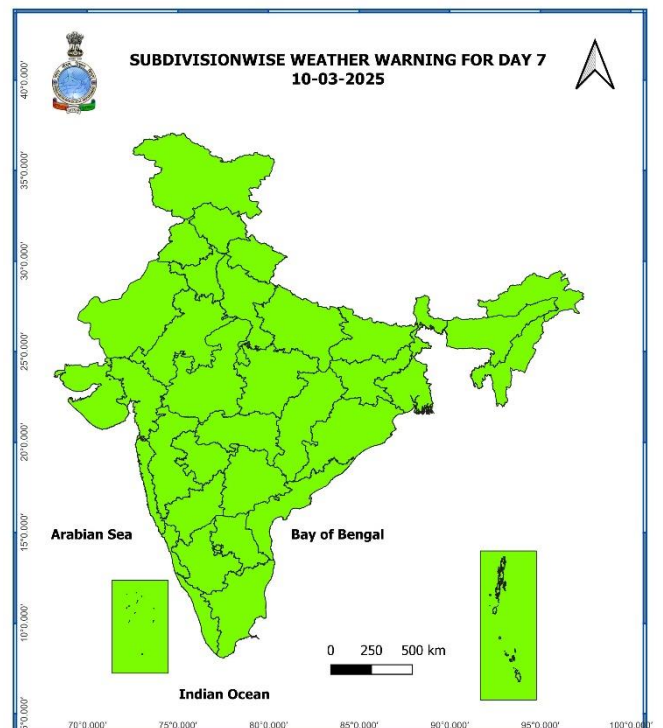
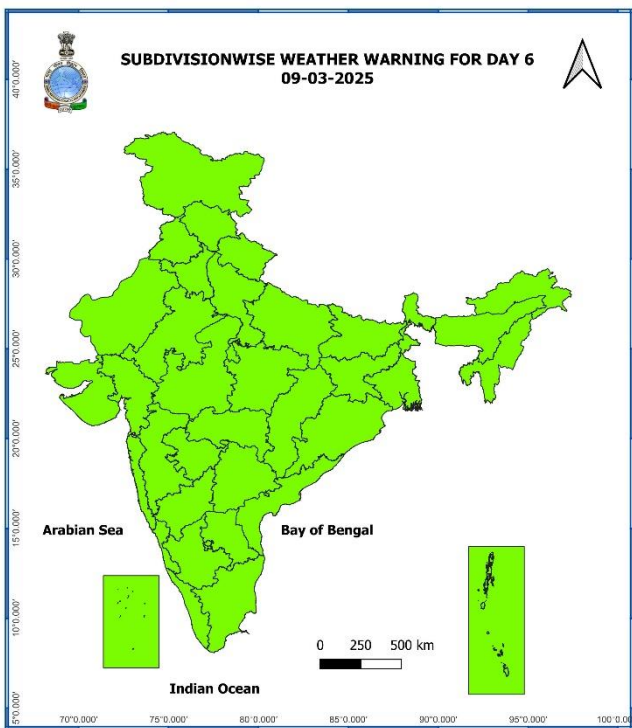
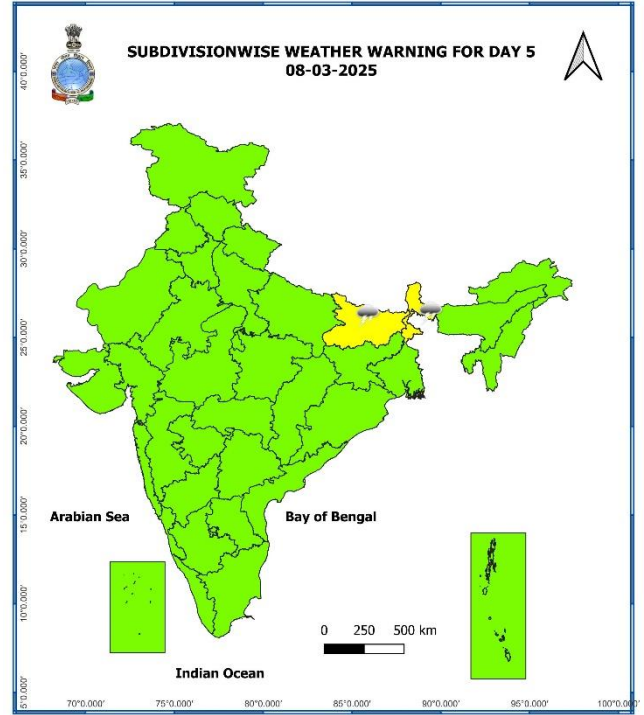
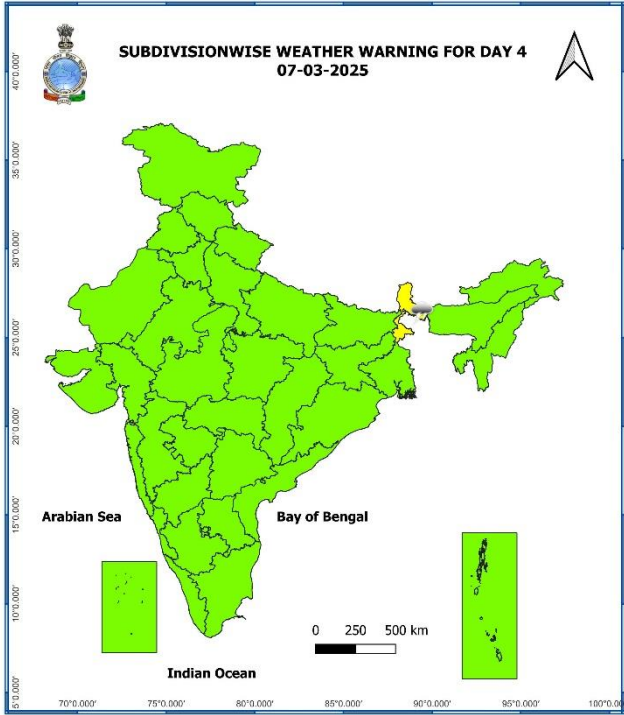


## 7 Days Rainfall Forecast

S. No.	Subdivision	04-Mar	05-Mar	06-Mar	07-Mar	08-Mar	09-Mar	10-Mar
		Day 1	Day 2	Day 3	Day 4	Day 5	Day 6	Day 7
1	ANDAMAN & NICOBAR ISLANDS	DRY	DRY	DRY	ISOL	SCT	SCT	SCT
2	ARUNACHAL PRADESH	SCT	SCT	ISOL	ISOL	ISOL	ISOL	DRY
3	ASSAM & MEGHALAYA	ISOL	DRY	DRY	DRY	DRY	DRY	DRY
4	NAGALAND, MANIPUR, MIZORAM & TRIPURA	DRY	DRY	DRY	DRY	DRY	DRY	DRY
5	SUB-HIMALAYAN WEST BENGAL & SIKKIM	ISOL	ISOL	ISOL	SCT	SCT	ISOL	ISOL
6	GANGETIC WEST BENGAL	DRY	DRY	DRY	DRY	DRY	DRY	DRY
7	ODISHA	DRY	DRY	DRY	DRY	DRY	DRY	DRY
8	JHARKHAND	DRY	DRY	DRY	DRY	DRY	DRY	DRY
9	BIHAR	DRY	DRY	DRY	DRY	ISOL	ISOL	DRY
10	EAST UTTAR PRADESH	DRY	DRY	DRY	DRY	DRY	DRY	DRY
11	WEST UTTAR PRADESH	DRY	DRY	DRY	DRY	DRY	DRY	DRY
12	UTTARAKHAND	SCT	DRY	DRY	DRY	DRY	DRY	ISOL
13	HARYANA CHANDIGARH & DELHI	DRY	DRY	DRY	DRY	DRY	DRY	DRY
14	PUNJAB	DRY	DRY	DRY	DRY	DRY	DRY	DRY
15	HIMACHAL PRADESH	SCT	DRY	DRY	DRY	DRY	ISOL	SCT
16	JAMMU & KASHMIR AND LADAKH	SCT	DRY	DRY	DRY	DRY	ISOL	SCT
17	WEST RAJASTHAN	DRY	DRY	DRY	DRY	DRY	DRY	DRY
18	EAST RAJASTHAN	DRY	DRY	DRY	DRY	DRY	DRY	DRY
19	WEST MADHYA PRADESH	DRY	DRY	DRY	DRY	DRY	DRY	DRY
20	EAST MADHYA PRADESH	DRY	DRY	DRY	DRY	DRY	DRY	DRY
21	GUJARAT REGION	DRY	DRY	DRY	DRY	DRY	DRY	DRY
22	SAURASHTRA & KUTCH	DRY	DRY	DRY	DRY	DRY	DRY	DRY
23	KONKAN & GOA	ISOL	DRY	DRY	DRY	DRY	DRY	DRY
24	MADHYA MAHARASHTRA	ISOL	DRY	DRY	DRY	DRY	DRY	DRY
25	MARATHAWADA	DRY	DRY	DRY	DRY	DRY	DRY	DRY
26	VIDARBHA	DRY	DRY	DRY	DRY	DRY	DRY	DRY
27	CHHATTISGARH	DRY	DRY	DRY	DRY	DRY	DRY	DRY
28	COASTAL ANDHRA PRADESH & YANAM	DRY	DRY	DRY	DRY	DRY	DRY	DRY
29	TELANGANA	DRY	DRY	DRY	DRY	DRY	DRY	DRY
30	RAYALASEEMA	DRY	DRY	DRY	DRY	DRY	DRY	DRY
31	TAMILNADU PUDUCHERRY & KARAIKAL	ISOL	DRY	DRY	DRY	DRY	DRY	ISOL
32	COASTAL KARNATAKA	DRY	DRY	DRY	DRY	DRY	DRY	DRY
33	NORTH INTERIOR KARNATAKA	DRY	DRY	DRY	DRY	DRY	DRY	DRY
34	SOUTH INTERIOR KARNATAKA	DRY	DRY	DRY	DRY	DRY	DRY	DRY
35	KERALA & MAHE	ISOL	ISOL	ISOL	ISOL	ISOL	ISOL	ISOL
36	LAKSHADWEEP	DRY	DRY	DRY	SCT	SCT	DRY	DRY

- As the lead period increases forecast accuracy decreases.





- Action may be taken based on ORANGE AND RED COLOUR warnings.
- Vulnerable regions likely urban and hilly areas action may be initiated for heavy rainfall warning.
- As the lead period increases forecast accuracy decreases.

Detailed district wise Multi Hazard weather warning for next five days available at <https://mausam.imd.gov.in/responsive/districtWiseWarningGIS.php>

**Weather forecast over Delhi/NCR during 04<sup>th</sup> Mar. to 07<sup>th</sup> Mar. 2025****Past Weather:**

There has been a rise in minimum temperature upto 06°C and rise in maximum temperature upto 04°C over Delhi/NCR during the past 24 hours. The maximum and minimum temperatures over Delhi are in the range of 29 to 31°C and 14 to 16°C, respectively. The minimum and maximum temperature were above normal upto 3°C over most places. Mainly clear sky conditions with predominant surface wind from the southeast direction with wind speeds less than 10 to 12 kmph prevailed during the past 24 hours. Mainly clear sky conditions with wind speed less than 14 kmph from the west direction prevailed over the region in the forenoon today.

**Weather Forecast:**

**04.03.2025:** Mainly clear sky. Strong surface winds (speed 25 – 35 kmph). The maximum temperature over Delhi is likely to be in the range of 26 to 28°C. The predominant surface wind will likely be from the northwest direction with a wind speed of less than 20 kmph till evening. It would decrease thereafter becoming less than 12 kmph from the northwest direction during the night.

**05.03.2025:** Mainly clear sky. Mist likely in the morning. Strong surface winds (speed 20 – 30 kmph). The maximum and minimum temperatures over Delhi are likely to be in the range of 25 to 27°C and 11 to 13°C, respectively. The predominant surface wind will likely be from the northwest direction with a wind speed of 12-14 kmph during morning hours. The wind speed will gradually increase thereafter becoming 22-24 kmph from the northwest direction during the afternoon. It will decrease becoming less than 12 kmph from the northwest direction during evening and night.

**06.03.2025:** Mainly clear sky. Mist likely in the morning. The maximum and minimum temperatures over Delhi are likely to be in the range of 28 to 30°C and 12 to 14°C, respectively. The predominant surface wind will likely be from the northwest direction with a wind speed of 12-14 kmph during morning hours. The wind speed will gradually increase thereafter becoming 16-18 kmph from the northwest direction during the afternoon. It will decrease becoming less than 08 kmph from the northwest direction during evening and night.

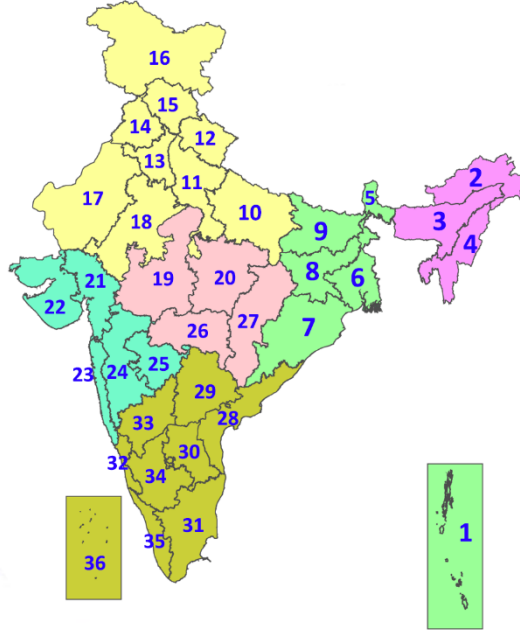
**07.03.2025:** Mainly clear sky. Mist likely in the morning. The maximum and minimum temperatures over Delhi are likely to be in the range of 28 to 30°C and 12 to 14°C, respectively. The predominant surface wind will likely be from the northwest direction with a wind speed of 08-10 kmph during morning hours. The wind speed will gradually increase becoming 10-12 kmph from the northwest direction in the afternoon. It will decrease becoming less than 08 kmph from the northwest direction during evening and night.

**Legends & abbreviations:**

- ❖ **Heavy Rain:** 64.5-115.5mm; **Very Heavy Rain:** 115.6-204.4mm; **Extremely Heavy Rain:** >204.4mm.
- ❖ **Obsy:** Observatory; **AWS:** Automatic Weather Station; **ARG:** Automatic Rain Gauge; **dist:** District; **NH:** National Highway; **KVK:** Krishi Vigyan Kendra; **DVC:** Damodar Valley Corporation; **PTO:** Part Time Office, **Aero:** Aerodrome, **IAF:** Indian Air Force.
- ❖ **Region wise classification of meteorological Sub-Divisions:**
  - **Northwest India:** Western Himalayan Region (Jammu-Kashmir-Ladakh-Gilgit-Baltistan-Muzaffarabad, Himachal Pradesh and Uttarakhand); Punjab, Haryana-Chandigarh-Delhi; West Uttar Pradesh, East Uttar Pradesh, West Rajasthan and East Rajasthan.
  - **Central India:** West Madhya Pradesh, East Madhya Pradesh, Vidarbha and Chhattisgarh.
  - **East India:** Bihar, Jharkhand, Sub-Himalayan West Bengal & Sikkim; Gangetic West Bengal, Odisha and Andaman & Nicobar Islands.
  - **Northeast India:** Arunachal Pradesh, Assam & Meghalaya and Nagaland, Manipur, Mizoram & Tripura.
  - **West India:** Gujarat Region, Saurashtra & Kutch, Konkan & Goa, Madhya Maharashtra and Marathawada.
  - **South India:** Coastal Andhra Pradesh & Yanam, Telangana, Rayalaseema, Coastal Karnataka, North Interior Karnataka, South Interior Karnataka, Kerala & Mahe, Tamil Nadu, Puducherry & Karaikal and Lakshadweep.

## LEGENDS

1. अंडमान और निकोबार द्वीपसमूह
2. अरुणाचल प्रदेश
3. असम और मेघालय
4. नागालैंड, मणिपुर, मिजोरम और त्रिपुरा
5. उप-हिमालयी पश्चिम बंगाल और सिक्किम
6. गंगीय पश्चिम बंगाल
7. ओडिशा
8. झारखंड
9. बिहार
10. पूर्वी उत्तर प्रदेश
11. पश्चिम उत्तर प्रदेश
12. उत्तराखंड
13. हरियाणा, चंडीगढ़ और दिल्ली
14. पंजाब
15. हिमाचल प्रदेश
16. जम्मू और कश्मीर और लद्दाख
17. पश्चिम राजस्थान
18. पूर्वी राजस्थान
19. पश्चिम मध्य प्रदेश
20. पूर्वी मध्य प्रदेश
21. गुजरात
22. सौराष्ट्र
23. कोंकण और गोवा
24. मध्य महाराष्ट्र
25. मराठवाड़ा
26. विदर्भ
27. छत्तीसगढ़
28. तटीय आंध्र प्रदेश और यनम
29. तेलंगाना
30. रायलसीमा
31. तमिलनाडु, पुडुचेरी और कराईकल
32. तटीय कर्नाटक
33. आंतरिक उत्तरी कर्नाटक
34. आंतरिक दक्षिणी कर्नाटक
35. केरल और माहे
36. लक्षद्वीप



1. Andaman & Nicobar Islands
2. Arunachal Pradesh
3. Assam & Meghalaya
4. Nagaland, Manipur, Mizoram & Tripura
5. Sub-Himalayan West Bengal & Sikkim
6. Gangetic West Bengal
7. Odisha
8. Jharkhand
9. Bihar
10. East Uttar Pradesh
11. West Uttar Pradesh
12. Uttarakhand
13. Haryana, Chandigarh & Delhi
14. Punjab
15. Himachal Pradesh
16. Jammu & Kashmir and Ladakh
17. West Rajasthan
18. East Rajasthan
19. West Madhya Pradesh
20. East Madhya Pradesh
21. Gujarat
22. Saurashtra
23. Konkan & Goa
24. Madhya Maharashtra
25. Marathwada
26. Vidarbha
27. Chhattisgarh
28. Coastal Andhra Pradesh & Yanam
29. Telangana
30. Rayalaseema
31. Tamilnadu, Puducherry & Karaikal
32. Coastal Karnataka
33. North Interior Karnataka
34. South Interior Karnataka
35. Kerala & Mahe
36. Lakshadweep

## SPATIAL DISTRIBUTION (% of Stations reporting)

% Stations	Category	% Stations	Category
76-100	Widespread (WS/Most Places)	26-50	Scattered (SCT/A Few Places)
51-75	Fairly Widespread (FWS/Many Places)	1-25	Isolated (ISOL)

- |                      |                      |              |
|----------------------|----------------------|--------------|
| Fog                  | Heavy Snow           | Cold Wave    |
| Heavy Rain           | Dust Storm           | Cold Day     |
| Very Heavy Rain      | Heat Wave            | Ground Frost |
| Extremely Heavy Rain | Warm Night           |              |
| Thunder & Lightning  | Hot Day              |              |
| Hailstorm            | Hot & Humid          |              |
| Dust Raising Winds   | Strong Surface Winds |              |

### COLOUR CODED WARNING

No Warning (No Action)
Watch (Be Aware)
Alert (Be Prepared To Take Action)
Warning (Take Action)

### Probabilistic Forecast

Terms	Probability of Occurrence (%)
Unlikely	< 25
Likely	25 - 50
Very Likely	50 - 75
Most Likely	> 75

\* Red colour warning does not mean "Red Alert", Red colour warning means "Take Action".  
Forecast and Warning for any day is valid from 0830 hours IST of day till 0830 hours IST of next day.  
For more details, kindly visit <https://mausam.imd.gov.in> or contact: 011-2434-4599  
(Service to the Nation since 1875)



## DEFINITION/CRITERIA

<b>Rain/ Snow *</b>	<b>Heavy:</b> 64.5 to 115.5 mm/cm * <b>Very Heavy:</b> 115.6 to 204.4 mm/cm * <b>Extremely Heavy:</b> > 204.4 mm/cm *
<b>Heat Wave</b>	<b>When maximum temperature of a station reaches <math>\geq 40^\circ\text{C}</math> for plains and <math>\geq 30^\circ\text{C}</math> for hilly regions</b> <b>(a) Based on Departure from normal</b> <b>Heat Wave:</b> Maximum Temperature Departure from normal $4.5^\circ\text{C}$ to $6.4^\circ\text{C}$ . <b>Severe Heat Wave:</b> Maximum Temperature Departure from normal $\geq 6.5^\circ\text{C}$ <b>(b). Based on Actual maximum temperature</b> <b>Heat Wave:</b> When actual maximum temperature $\geq 45^\circ\text{C}$ . <b>Severe Heat Wave:</b> When actual maximum temperature $\geq 47^\circ\text{C}$ <b>(c). Criteria for heat wave for coastal stations</b> When maximum temperature departure is $> 4.5^\circ\text{C}$ from normal. Heat Wave may be described provided maximum temperature $\geq 37^\circ\text{C}$
<b>Warm Night</b>	<b>When maximum temperature remains <math>40^\circ\text{C}</math></b> <b>Warm Night:</b> When minimum temperature departure $4.5^\circ\text{C}$ to $6.4^\circ\text{C}$ . <b>Severe Warm Night:</b> When minimum temperature departure $> 6.4^\circ\text{C}$ .
<b>Cold Wave</b>	<b>When minimum temperature of a station <math>\leq 10^\circ\text{C}</math> for plains and <math>\leq 0^\circ\text{C}</math> for hilly regions.</b> <b>(a). Based on departure</b> <b>Cold Wave:</b> Minimum Temperature Departure from normal $-4.5^\circ\text{C}$ to $-6.4^\circ\text{C}$ . <b>Severe Cold Wave:</b> Minimum Temperature Departure from normal $\leq -6.5^\circ\text{C}$ <b>(b) Based on actual Minimum Temperature (for Plains only)</b> <b>Cold Wave :</b> When Minimum Temperature is $\leq 4.0^\circ\text{C}$ <b>Severe Cold Wave:</b> When Minimum Temperature is $\leq 2.0^\circ\text{C}$ <b>(c) For Coastal Stations</b> When Minimum Temperature departure is $\leq -4.5^\circ\text{C}$ & actual Minimum Temperature is $\leq 15^\circ\text{C}$
<b>Cold Day</b>	<b>When minimum temperature of a station <math>\leq 10^\circ\text{C}</math> for plains and <math>\leq 0^\circ\text{C}</math> for hilly regions</b> <b>Based on departure</b> <b>Cold Day:</b> Maximum Temperature Departure from normal $-4.5^\circ\text{C}$ to $-6.4^\circ\text{C}$ . <b>Severe Cold Day:</b> Maximum Temperature Departure from normal $\leq -6.5^\circ\text{C}$
<b>Fog</b>	<b>Phenomenon of small droplets suspended in air and the horizontal visibility <math>&lt; 1\text{km}</math></b> <b>Moderate Fog:</b> When the visibility between 500-200 metres <b>Dense Fog:</b> when the visibility between 50- 200 metres <b>Very Dense Fog:</b> when the visibility $< 50$ metres
<b>Thunderstorm</b>	Sudden electrical discharges manifested by a flash of light (Lightning) and a sharp rumbling sound (thunder)
<b>Dust/Sand Storm</b>	An ensemble of particles of dust or sand energetically lifted to great heights by a strong and turbulent wind.
<b>Frost</b>	<b>Ice deposits on ground</b> Air temperature $\leq 4^\circ\text{C}$ ( over Plains)
<b>Squall</b>	<b>A strong wind that rises suddenly, lasts for atleast 1 minute.</b> <b>Moderate:</b> Wind speed 52-61 kmph <b>Severe:</b> Wind speed 62-87 kmph <b>Very Severe:</b> Wind speed $> 87$ kmph
<b>Sea State</b>	<b>Effect of various waves in the sea over specific area</b> <b>Rough to very rough:</b> Wind speed 41-62 kmph (22-33 knots) & Wave height 2.5-6 metre <b>High to very high:</b> Wind speed 63-117 kmph ( 34-63 knots) & Wave height 6-14 metre <b>Phenomenal:</b> Wind speed $> 117$ kmph ( $> 63$ knots) & Wave height $> 14$ metre
<b>Cyclone</b>	<b>Cyclonic Storm:</b> Wind speed 62-87 kmph (34-47 knots) <b>Severe Cyclonic Storm:</b> Wind speed 88-117 kmph (48-63 knots) <b>Very Severe Cyclonic Storm:</b> Wind speed 118-165 kmph (64 - 89 knots) <b>Extremely Severe Cyclonic Storm:</b> Wind speed 166-220 kmph (90 -119 knots) <b>Super Cyclone Strom:</b> Wind speed $> 220$ kmph ( $> 119$ knots)

\* Red colour warning does not mean "Red Alert", Red colour warning means "Take Action".  
 Forecast and Warning for any day is valid from 0830 hours IST of day till 0830 hours IST of next day.  
 For more details, kindly visit <https://mausam.imd.gov.in> or contact: 011-2434-4599  
 (Service to the Nation since 1875)

**Hot and Humid:** When maximum temperatures remain  $3^\circ\text{C}$  above normal along with the above normal relative humidity.